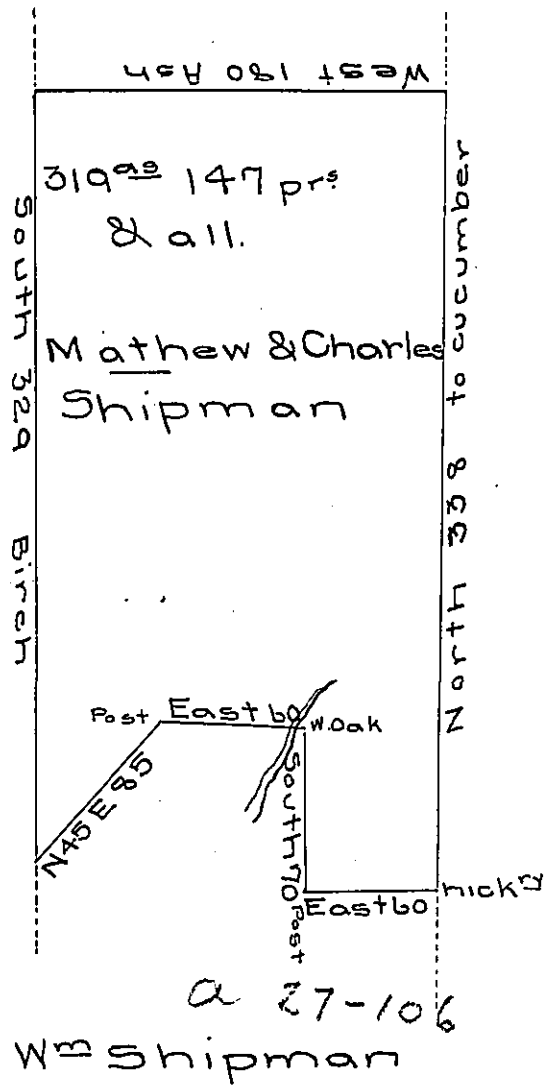


D 7-15

Henry Wycoff

C 30-230

Nichland & Griffith



N<sup>o</sup> 5537

Draft of a tract of land situate in Cone wango town-  
 ship Warren county on the East side of the Cone-  
 wango creek adjoining land surveyed to Henry Wy-  
 coff on the North on West Nichland & Griffith on  
 the East N<sup>o</sup> 5537 on the South W<sup>m</sup> Shipman cont-  
 aining three hundrednineteen acres one hund-  
 red forty seven perches & allowane surveyed the  
 8<sup>th</sup> day of November A.D. 1832 on warrent granted  
 to Matthew and Charles Shipman for three hun-  
 dred acres dated 14<sup>th</sup> Septer A.D. 1832.

John Andrews D.S.  
 Warren County

Jacob Spangler Esq. }  
 Surveyor General

*IN TESTIMONY* that the above is a copy of the original remaining on file in  
 the Department of Internal Affairs of Pennsylvania, made  
 comformably to an Act of Assembly approved the 16th day of  
 February 1833, I have hereunto set my hand and caused  
 the Seal of said Department to be affixed at Harrisburg,  
 this twenty-eighth day of February 1907.

*Isaac N. Brown*  
 Secretary of Internal Affairs.